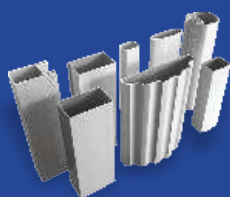


**GLORIA GROUP ENTERPRISE**



**Gloria Aluminium  
India Pvt. Ltd.**



[www.gloriaaluminium.com](http://www.gloriaaluminium.com)

## COMPANY PROFILE

GLORIA more than being a successful first generation business enterprise, is a throbbing and passionate story of its people, values and indomitable spirit of faith and innovation. It is the story of an ever-growing vibrant family that is founded on ethics, anchored on humanism, energized by passion, driven by the spirit of excellence and above all is in quest for immortality.

Gloria Alluminium India Pvt. Ltd. is one of the India's largest aluminium extrusion company having two extrusion manufacturing line facility. Gloria Alluminium is a fast growing global extrusion company with business interest ranging from design to manufacturing of aggregates and systems related to commercial and industrial profiles.

The company's core business is in aluminium extrusions with a total annual capacity of 4500 MT. Team Gloria is committed towards quality & strive continuously for customer satisfaction. In a span of 3 years we have been associated with some of the world finest companies in their growth & success.

Gloria Alluminium India Pvt. Ltd. is a sister concern of Gloria Group with a legacy spanning 25 years.

## MISSION

"To cater to the customers both in the domestic market as well as global market with what they need at a price, which to them represents value, and delivered in a manner that exceeds their expectations."

## VISION

"To become the largest supplier of quality aluminium extrusions in the global market."

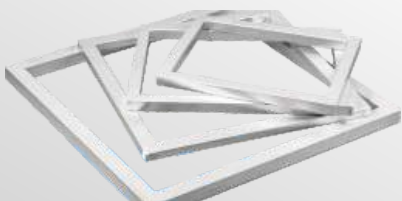
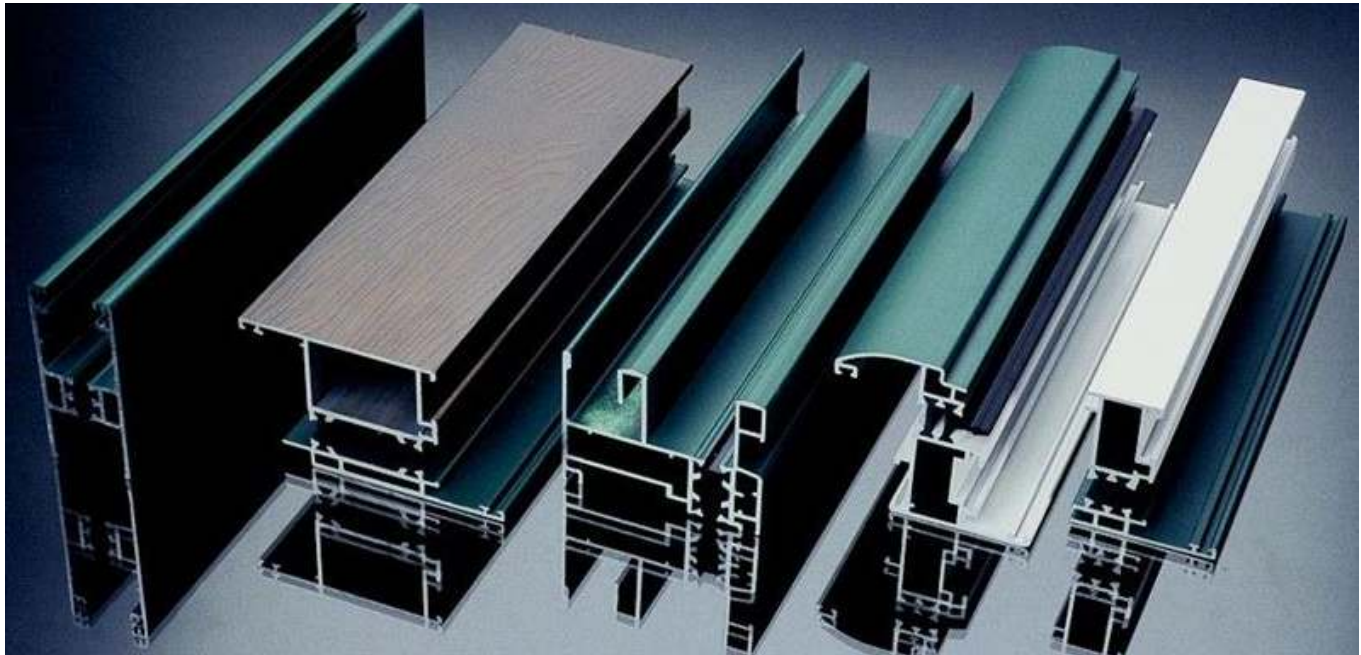
## INDUSTRY WE SERVE

- Air Ducting
- Air Filters
- Air Conditioner Grills
- Architectural Sections
- Automation
- Automobile
- Bus Windows
- Car Accessories
- Construction Formwork
- Electrical And Transmission
- Fencing Profiles
- Flat bars
- Green House
- Heat Sinks
- LED
- Modular Furniture
- Pipes & Tubes
- Photo Frames
- Railways
- Refrigerated Vans
- Solar
- Special Doors & Windows
- Special Purpose Machines
- Scaffolding





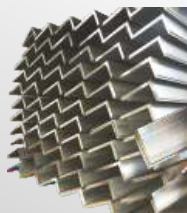
OUR PRODUCTS



FRAME SECTION



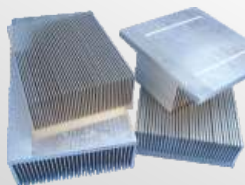
FENCING SECTION



SOLAR SECTION



WINDOW SECTION



HEAT SINK SECTION



TUBE SECTION



LADDER SECTION



SCAFFOLDING SECTION

## APPLICATIONS OF ALUMINIUM



**CONSTRUCTION**

**METROS**



**GREENHOUSE**



**ELECTRICAL & ELECTRONICS**



**AUTOMOTIVE**



**SOLAR**



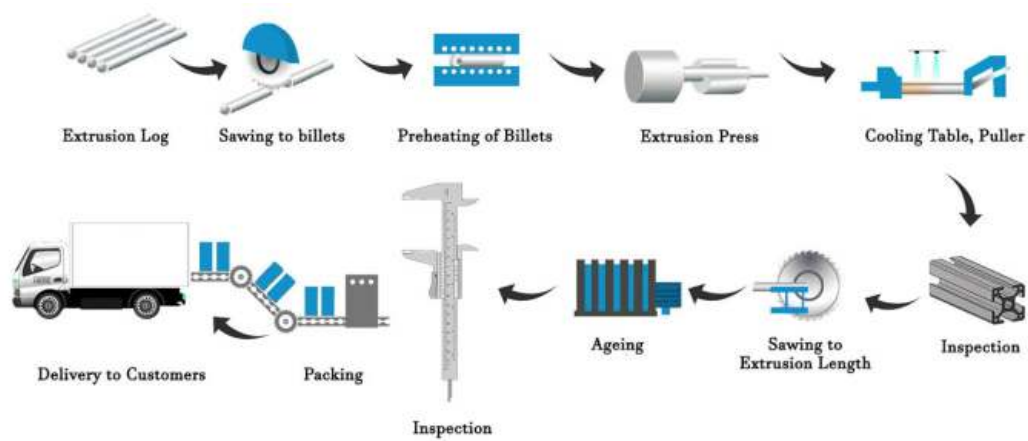
**SPM (SPECIAL PURPOSE MACHINE)**



**MODULAR FURNITURE**



EXTRUSION PROCESS



Aluminium Alloy  
Composition Limits [ % Weight ]

Alloy	Si	Fe	Cu	Mn	Mg	Cr	Zn	V	Ti	Bi	Ga	Pb	Zr	Limits <sup>++</sup> Each Total	Al
3003	0.6	0.7	0.05-0.20	1.0-1.5			0.1							0.05 0.15	remainder
6005	0.6-0.9	0.35	0.1	0.1	0.40-0.6	0.1	0.1		0.1					0.05 0.15	remainder
6005A <sup>+</sup>	0.5-0.9	0.35	0.3	0.5	0.40-0.7	0.3	0.2		0.1					0.05 0.15	remainder
6060	0.3-0.6	0.1-0.3	0.1	0.1	0.35-0.6	0.05	0.15		0.1					0.05 0.15	remainder
6061	0.4-0.8	0.7	0.15-0.40	0.15	0.8-1.2	0.04-0.35	0.25		0.15					0.05 0.15	remainder
6063	0.2-0.6	0.35	0.1	0.1	0.45-0.9	0.1	0.1		0.1					0.05 0.15	remainder
6066	0.9-1.8	0.5	0.7-1.2	0.6-1.1	0.8-1.4	0.4	0.25		0.2					0.05 0.15	remainder
6070	1.0-1.7	0.5	0.15-0.40	0.4-1.0	0.50-1.2	0.1	0.25		0.15					0.05 0.15	remainder
6082	0.7-1.3	0.5	0.1	0.4-1.0	0.60-1.2	0.25	0.2		0.1					0.05 0.15	remainder
6105	0.6-1.0	0.35	0.1	0.1	0.45-0.8	0.1	0.1		0.1					0.05 0.15	remainder
6162	0.4-0.8	0.5	0.2	0.1	0.7-1.1	0.1	0.25		0.1					0.05 0.15	remainder
6262	0.4-0.8	0.7	0.15-0.40	0.15	0.8-1.2	0.04-0.14	0.25		0.15	0.40-0.7		0.40-0.7		0.05 0.15	remainder
6351	0.7-1.3	0.5	0.1	0.40-0.8	0.40-0.8		0.2		0.2					0.05 0.15	remainder
6463	0.2-0.6	0.15	0.2	0.05	0.45-0.9		0.05							0.05 0.15	remainder

<sup>+</sup> Manganese plus chromium must between 0.12-0.50%  
<sup>++</sup> This column lists the limits that apply to all elements, whether a table column exists for them or not, which no other limits are specified.



## EXTRUSION FACILITIES



**Press 1 : 900MT (5 Inch)**  
Make - India

**Press 2 : 700MT (4 Inch)**  
Make - Taiwan

Both these press are fully automated. The principal function of extrusion press is to make flow the aluminum through the die at a controlled speed and temperature. This is achieved by means of hydraulic cylinder & hydraulic circuits controlled by a PLC system. Both these press are equipped with automatic puller.

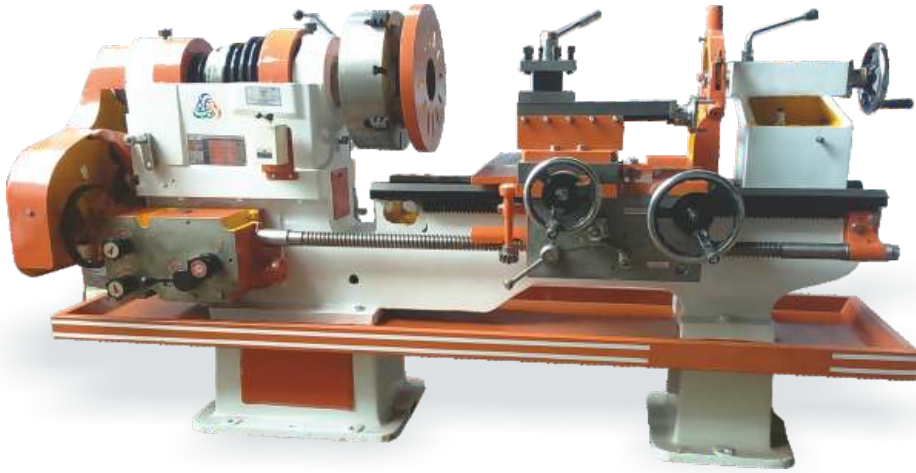


## HOT TOP CASTING

Foundry is equipped with imported HOT-TOP continuous log casting machine for producing the Billets of Dia - 5" and 4" length up to 6 meter series.



## TOOL ROOM FACILITIES



**LATHE MACHINE**



**MILLING MACHINE**



**SPECTROMETER MACHINE**



**EDM WIRE CUTTING MACHINE**



**UNIVERSAL TESTING MACHINE**



**HARDNESS TESTING MACHINE**

## DIE MACHINING



## DIE NITRIDING

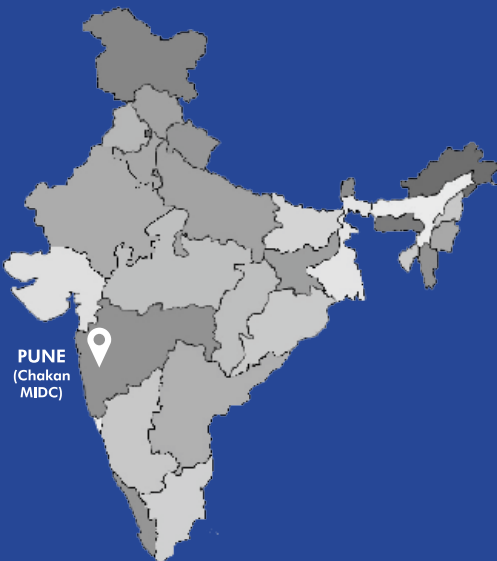






## Gloria Aluminium India Pvt. Ltd.

[www.gloriaaluminium.com](http://www.gloriaaluminium.com)



**Address :** Plot No.B/18, Chakan Industrial Area,  
Phase-II, MIDC Vasuli Khed, Opposite GE India, Pune - 410501

**EMAIL :** [info@gloriaaluminium.com](mailto:info@gloriaaluminium.com)

**Contact :** +91 88889 49491, +91 96076 96678